

**PLAN NOW**

.....  
**Learn** about the county's evacuation process, preparedness resources and information.

**Understand** the different levels of evacuation and impact on shelter openings.

**Identify** your closest shelter site (based on the evacuation level) and emergency transportation location. Determine how and when you will get there (*see emergency evacuation transportation section*).

**Special Needs Shelter Registration:** During an evacuation, Hillsborough County opens special needs shelter(s) for people who require medical monitoring. The special needs shelters do not provide 'hands-on' medical care.

PRE REGISTRATION for the special needs shelter is REQUIRED. Contact the Hillsborough County InfoLine at (813) 272-5900 for additional information and to be considered for this program.

*Note: Hospitals are not evacuation shelters.*



.....  
**KNOW WHAT YOU WILL DO**

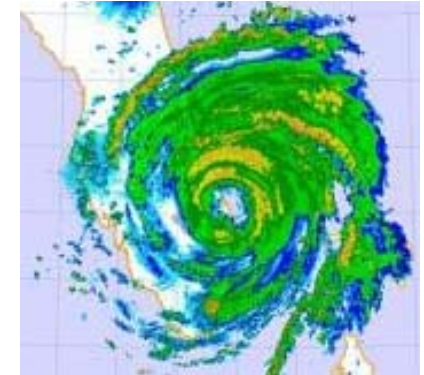
My HART Evacuation Bus Route: \_\_\_\_\_  
 (See HART's Emergency Evacuation Bus Route Guide)

My Nearest Red Cross Shelter: \_\_\_\_\_  
 (See the 2008 Hurricane Guide for Red Cross emergency shelter locations)

.....  
**IMPORTANT PHONE NUMBERS**

Citizen Emergency Info	(813) 276-2385
HART Information (bus routes)	(813) 254-4278
211 Referral Line	211
American Red Cross Tampa Bay Chap.	(813) 348-4820
Special Needs Shelter	(813) 272-5900
Hillsborough County Fire Rescue	(813) 272-6600
Hillsborough County Sheriff's Office	(813) 247-8200
Tampa Police Dept.	(813) 276-3200
Tampa Fire Rescue	(813) 274-7011
Emergency	911
Hillsborough County Emergency Mgmt.	(813) 272-6900

**HURRICANE EVACUATION  
 INFORMATION FOR  
 HOMELESS CITIZENS IN  
 HILLSBOROUGH COUNTY**



If you are homeless please use this information to ensure your safety if a hurricane threatens our area.



[www.homelessofhc.org](http://www.homelessofhc.org)

*The information in this guide was compiled by the Homeless Coalition of Hillsborough County with information from: Hillsborough County Emergency Management's "2008 Hurricane Guide," emergency management staff, American Red Cross staff; and HART's "Emergency Evacuation Bus Route Guide."*

*This guide should be used in conjunction with other hurricane preparedness information publications available throughout Hillsborough County.*

## BEFORE THE STORM

Watch / listen (as possible) to local media for updates on the storm and evacuation information.

Storm and evacuation information can also be found on most news media Web sites and the county's emergency management site:

[www.hillsboroughcounty.org/emergency/hurricaneinfo](http://www.hillsboroughcounty.org/emergency/hurricaneinfo)

## EVACUATION ORDERED

As soon as you are aware of an evacuation, **immediately** go to the closest Red Cross emergency evacuation shelter.

**DO NOT WAIT.  
DO NOT GAMBLE WITH YOUR LIFE.**

## EMERGENCY EVACUATION TRANSPORTATION

Area buses will run special evacuation routes throughout the county to assist people who need transportation to shelters. This is a **FREE** service.

The buses will run only during daylight hours and will only stop at the designated emergency route stops and shelters.

You will be allowed a limited amount of items on the bus. In general items are limited to:

- 3! One (1) suitcase / bag
- 3! Change of clothes for 3 days
- 3! Toiletries, medications
- 3! Blanket / sleeping bag / pillow
- 3! Drinking water; some non-perishable foods
- 3! Books, games

No weapons, alcohol or flammable material will be allowed on the bus.

HART buses are used for the emergency routes in the greater Tampa and Town n' Country areas; county school buses are utilized in South and East county areas.

## AT THE SHELTER

Red Cross shelters are open for anyone who needs safe shelter during a storm evacuation. This includes people who are homeless.

Evacuation shelter is provided **FREE**.

ID is NOT required at a Red Cross shelter.

No one will be turned away from a Red Cross shelter during an evacuation unless they possess drugs, alcohol or weapons.

Red Cross shelters are a safe refuge from the elements during a storm evacuation. As such, provisions at these shelters are minimum.

At the shelter:

- 3! each person will have a small amount of space (*approximately 3 X 6 feet*)
- 3! mats, blankets or bedding are not provided
- 3! meals are provided during the length of the evacuation
- 3! calm, respectful and courteous behavior is expected

Follow all posted rules and directions from shelter workers.

For your safety, please do not leave the shelter until notification is given that it is safe to leave.



## Designated Evacuation Shelter for Sexual Offenders and Predators

If you are a sexual offender or predator and need safe shelter during an evacuation, your designated evacuation shelter is the Falkenburg Jail located at 520 N. Falkenburg Rd.

Do not go to any other shelter.

Ask your probation officer, prior to a storm, about your transportation options to your designated shelter.

## AFTER THE STORM

Shelter staff will notify everyone at the shelter when it is safe to leave (*as determined by the county's emergency management and based on storm damage in the community*).

Upon notification that it is safe to leave the shelter, all persons are required to leave.

The Red Cross shelters close once the storm conditions are no longer dangerous.

Buses will run return service from the shelter back to the emergency bus stops. This bus service is also **FREE**.

## SAFETY AFTER THE STORM

Damage following a storm can create safety hazards throughout the community.

For your personal safety:

- 3! **Be careful where you step** - flooding can cause unstable ground
- 3! **Avoid flooded areas**
- 3! **Do not walk through flood waters** - the water may conceal unknown hazards and obstructions, and/or be contaminated
- 3! **Do not walk through flowing water** - a few inches of moving water can knock you off your feet
- 3! **Do not touch loose, dangling and/or downed power lines** - they may still have electricity flowing through them

